

Cobblestone Row: Unique Top Floor Condo in Downtown Glendale



236 North Louise Street, No 301, Glendale, CA 91206

WEB: 236NorthLouise.com

- » Beds: 2 | Baths: 1 Full, 1 Three-Quarter
- » MLS #: 18-333910
- » Single Family | 1,232 ft² | Lot: 35,224 ft² (0.81 acres)
- » Architect Designed,, Collins & Wraight AIA 1980
- » Top Floor with Courtyard & Downtown Views
- » Light & Airy with Vaulted Ceilings
- » Gated Underground Parking

QR Code

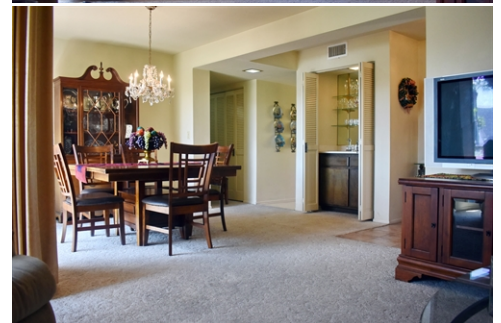


Michael Locke
Andy Jelmert
(323) 644-3338
(323) 533-3161
mlocke@deasypenner.com
<http://www.Deasypenner.com>



Deasy Penner & Partners
200 South Los Robles
Pasadena, CA 91101
(626) 683-0777

\$ 560,000



SOLD (\$21,000 over asking price) Architect-designed "Cobblestone Row", Collins & Wraight AIA, Architects 1980. Centrally located in close proximity to Downtown Glendale. Desirable top floor corner unit featuring vaulted ceilings, fireplace, wet bar, central air and heat, two parking spaces and laundry room. Exceptional 36-unit complex with gorgeous landscaping and fountains, secure, gated underground parking. HOA includes Direct TV, High Speed Internet connection.

